

stick

SUNLITE TOUCH-SENSITIVE INTELLIGENT CONTROL KEYPAD



THE INDUSTRY STANDARD IN LIGHTING CONTROL



Flat wall mounted lighting controller

Boîtier de contrôle mural | Controlador plano, montaje de pared | Flach montierbarer Lichtsteuerung

State of the art design and technology

Design et prestations haut de gamme | Diseño novedoso y de alta tecnología | Modernstes Design und Technologie

Ideal for LED, RGB and DMX lighting

Idéal pour les éclairages DMX à LED | Ideal para LED, RGB y DMX | Ideal für LED, RGB und DMX Beleuchtung

Stand alone touch sensitive control panel

Panneau de commande sensible autonome | Pantalla sensitiva al tacto | Berührungsempfindliches Bedienfeld

128 to 1024 DMX OUT channels

1024 canaux DMX en sortie | 1024 canales DMX OUT (2 universos) | 1024 DMX OUT Kanäle (2 Universes)

USB connection for easy programming

Logiciel de programmation via USB | Programación del software via USB | USB Verbindung zum Softwareprogrammieren

iPhone, iPad, Android applications

Applications pour smartphones | El software para los smartphones | Smartphones Programmen

Ethernet RJ45 connection and synchronization

Fonctions Réseau-Ethernet avancées | Características Ethernet avanzadas | Tiefe Ethernet-Network anwendungen

Unlimited memory via SDCARD

Mémoire SDCARD, capacité virtuellement illimitée | Memoria ilimitada vía SDCARD | Unlimitierter Speicher durch SD-Karten

Integrated clock/calendar

Horloge et calendrier intégrés | Reloj/Calendario Integrado | Integrierte Uhr und Kalenderfunktion

8 Ports, RS232, Infra Red

8 ports, RS232, Infrarouge | 8 puertos, RS232, Infra Red | 8 ports, RS232, Infra Red

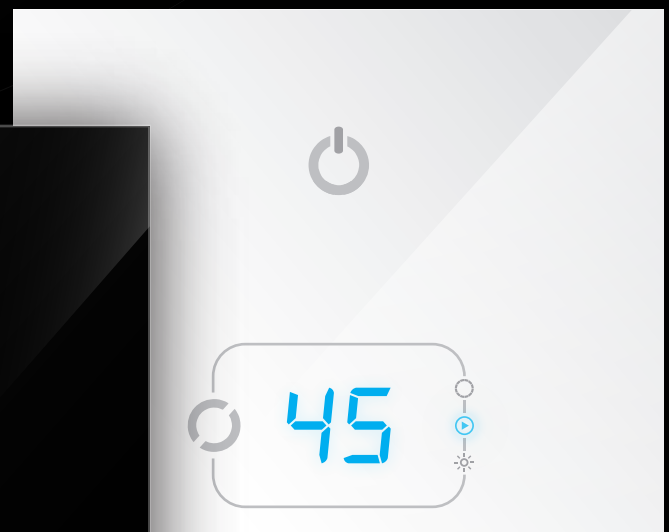
Internet Design Center for customization

Personnalisation avec le Design Center | Centro de Diseño de personalización | Design Center für individuelle Anpassung

STICK-DE3

STICK-GU2

STICK-GA2



LIGHTING AT THE TIP OF YOUR FINGERS

The sensitive keys enable you to easily and comfortably modify the lighting effects... Controlling both speed and color has now become mere child's play.

LA LUMIÈRE AU BOUT DES DOIGTS

Les touches sensibles invitent à modifier l'ambiance lumineuse avec un confort extrême... Agir sur l'intensité, la couleur et la vitesse des effets devient un jeu d'enfant.

français

ILUMINACIÓN EN LA PUNTA DE SUS DEDOS

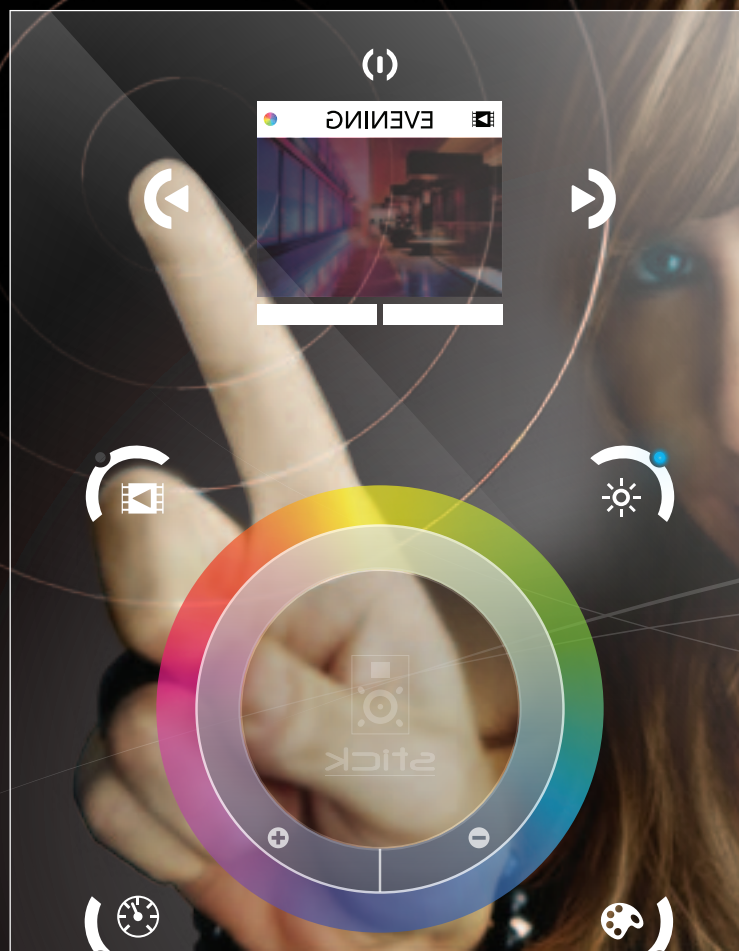
Las teclas sensibles le permite modificar sus efectos de iluminación fácilmente... Cualquier niño puede ahora controlar la velocidad y el color.

español

LICHT AUF KNOPFDRUCK

Die sensiblen Tasten ermöglichen eine einfache und bequeme Einstellung der Lichteffekte... Die Kontrolle von Geschwindigkeit und Farbe ist nun ein reines Kinderspiel.

deutsch



OVERVIEW

APPLICATIONS

RANGE

HARDWARE

SOFTWARE

ARCHITECTURAL LIGHTING USE THE STICK

commercial

exhibition

train station

restaurant

apartment

hotel

monument

museum

stadium

theme parks

office

bar

facade

garden

shop

resort

club

airport

yacht

home

residential

fountain

landscape

casino



OVERVIEW

APPLICATIONS

RANGE

HARDWARE

SOFTWARE

...ANYWHERE

train station

residential

exhibition

garden

restaurant

home

hotel

monument

resort

shop

fountain

museum

facade

apartment

office

bar
club

airport

landscape

yacht

theme parks

casino

stadium

commercial



EASY SETUP ROBUST TECHNOLOGY

Thanks to their 'All-In-One' technology, each STICK package includes a high-tech keypad, stand alone memory storage and a powerful DMX512 lighting software package. Mainly due to an absence of mechanical buttons, the strongly built STICK is time proof.

DESIGN, SOBRIÉTÉ INSTALLATION SANS DIFFICULTÉ

L'absence de bouton mécanique donne au boîtier STICK une sobriété et une robustesse à l'épreuve du temps. Les designers l'ont voulu ainsi. Le boîtier STICK est adaptable aux multiples formats de boîtes électriques encastrables.

français

DISEÑO SENCILLO FUERZA EXTREMA Y FÁCIL INSTALACIÓN

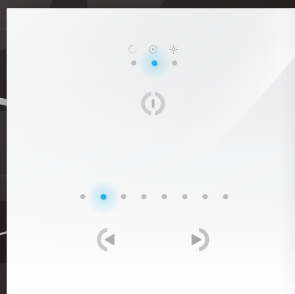
Al no tener botones mecánicos, la interfase fuerte STICK es a prueba-de-tiempo. Así es como los diseñadores lo planearon. Nuestra interfase STICK puede instalarse en una variedad de cajas eléctricas estándar.

español

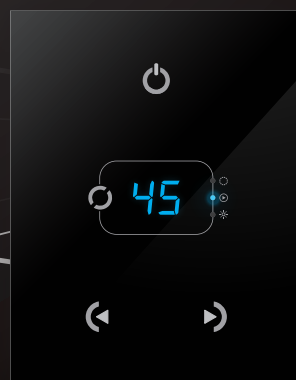
ELEGANTES DESIGN EXTREME HALTBARKEIT UND ZUVERLÄSSIGKEIT

Aufgrund fehlender Druckknöpfe hält die Box den neuesten Anforderungen stand. Genau so haben es die Designer gewollt. Die STICK Box kann an verschieden große elektrische Einbaurahmen angepasst werden.

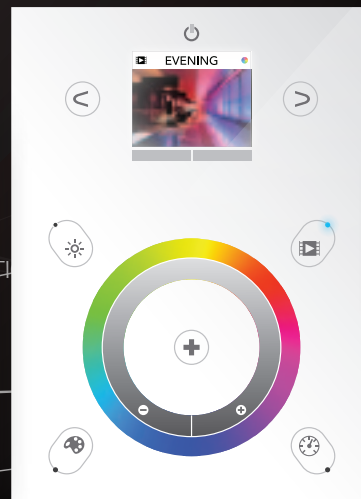
deutsch



STICK-GU2



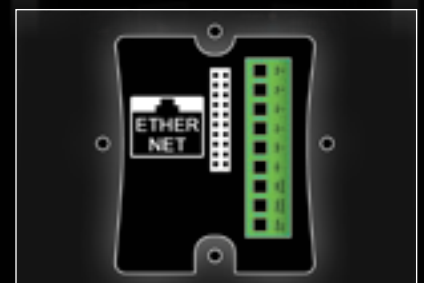
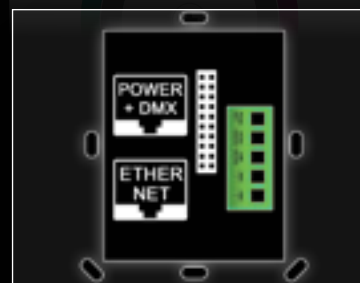
STICK-GA2



STICK-DE3



STICK-KE1



STICK RANGE 4 PRODUCTS

The STICK range has been designed to offer the perfect lighting control solution for any environment. From the sophisticated STICK-GU2 and STICK-GA2 up to the powerful network functionality of the STICK-DE3 and STICK-KE1, each STICK has been tailored to meet everyone's needs.

	STICK-GU2	STICK-GA2	STICK-DE3	STICK-KE1	
General	Design	Glass	Glass	Glass	Plastic
	Dimensions	86 x 86 x 11 mm	86 x 110 x 11 mm	106 x 146 x 11 mm	130 x 170 x 11 mm
	Weight	130g	160g	250g	200g
	USB connection	•	•	•	•
	Ethernet connection			•	•
	DMX channels	128	512	2x512	2x512
	SD card			MicroSD card	MicroSD card
Software	ESA software	PC	PC	PC	PC
	ESA2 software	PC / Mac	PC / Mac	PC / Mac	PC / Mac
	ESA Pro software			PC	PC
	DMX recorder software			PC	PC
	DMX Lightpad app			iOS / Android	iOS / Android
	Arcolis app			iOS / Android	iOS / Android
Stand Alone	Number of scenes	24	99	500	200
	Number of zones	1	1	10	5
	Memory capacity (steps) with 20 chan.	840	3200	SD card limit	SD card limit
	Memory capacity (steps) with 60 chan.	310	1200	SD card limit	SD card limit
	Memory capacity (steps) with 512 chan.		140	SD card limit	SD card limit
	Power voltage	5V-12V DC	5V-12V DC	5V-6V DC	5V-6V DC
	Power connector	Screw terminal block	Screw terminal or RJ45	Screw terminal or RJ45	Screw terminal block
Triggering	Live control	Color / Dimmer	Color / Dimmer	Color / Dimmer / Speed	Color / Dimmer / Speed
	Touch-sensitive buttons	3	4	20	22
	Port triggering	1	8	8	8
	Clock triggering			100	40
	RS232 triggering			•	•
	Audio triggering				KU1 only
	Infra Red triggering				•
Optional	AC/DC adapter (not included)	Ref. POWER4M	Ref. POWER4M	Ref. POWER4M	Ref. POWER4M
	IR remote control (not included)				Ref. IR-REMOTE
	RJ45 to CONNECTOR BLOCK board		Ref. RJ2BLOCK	Ref. RJ2BLOCK	

STICK-GU2

DIMMER SWITCH OF THE 21st CENTURY

The STICK-GU2 is a sleek glass fronted DMX wall panel. Available in black and white, this small and easy to use interface packs in 3 touch sensitive buttons, Stand alone memory and USB into an intelligent wall mounted controller just 11mm thick!

As simple as a dimmer switch

3 touch sensitive buttons

Glass wall-mounted DMX controller

Micro-USB for programming

Customized design for OEM

For PC, Mac & Tablet with USB

32bit ARM technology

86x86x11mm size

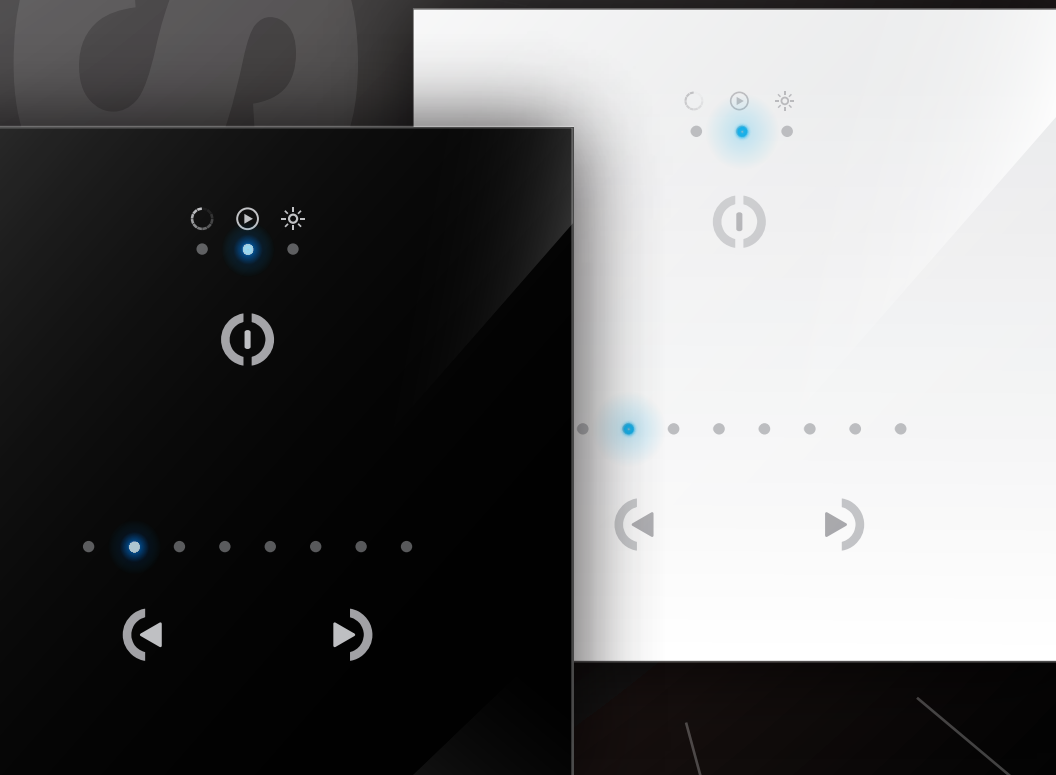
Software included

Stand alone operation

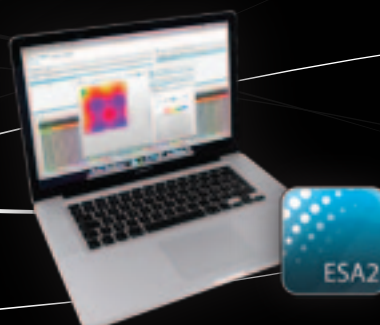
Ready to use (pre-loaded)

128 DMX channels

Up to 24 scenes



Tablet with USB PORT



THE MOST SIMPLE
GLASS TOUCH DMX CONTROLLER

THE MOST POWERFUL
LIGHTING SOFTWARE BUNDLE

THE INDUSTRY STANDARD
FOR RGB, LED, DMX LIGHTING

ON/OFF

Tap here to switch on and off

CHANGE MODE

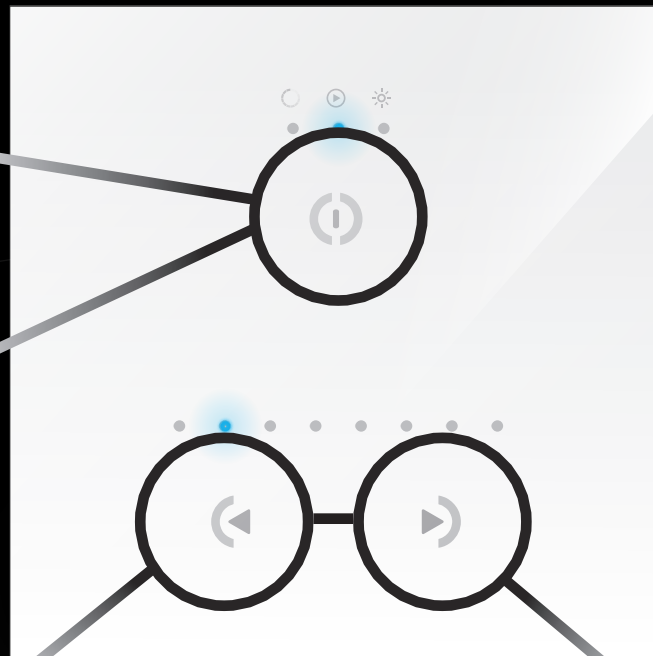
Tap here
To change between
color, scene and
dimmer mode

RESET

Tap both arrows together
to remove any dimmer
and color changes

COLOR/SCENE/DIMMER

Tap the arrows to change color,
scene and dimmer values



Scene



Scene 2/8

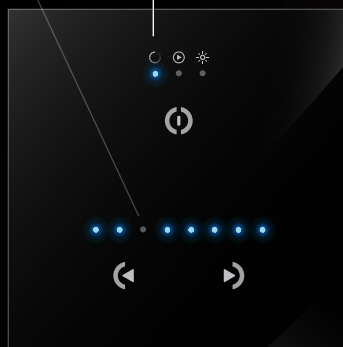
Dimmer



65%

Yellow

Color



STICK-GA2

MIGHTY POWERFUL BEAUTIFUL & CHARMING

The STICK-GA2 offers the best solution for projects requiring a large amount of scenes along with an uncluttered and intuitive interface. The computer programmable GU2 is capable of playing up to 99 scenes, each of which can be modified by touching the mode button to change the dimmer and color.

- Large memory capacity
- 4 touch sensitive buttons
- Glass wall-mounted DMX controller
- Micro-USB for programming
- Customized design for OEM
- For PC, Mac & Tablet with USB
- 32bit ARM technology
- 86x110x11mm size
- Software included
- Stand alone operation
- Ready to use (pre-loaded)
- 512 DMX channels
- Up to 99 scenes
- Up to 99 scenes



Compatible with :



Tablet with USB PORT

ARCOLIS
mobile lighting control

The LED display of the GA2 makes it easy to tell which scene number is playing. The wall panel is slightly taller than the STICK-GU2 allowing it to be mounted onto any single gang wall socket around the world.

ON/OFF

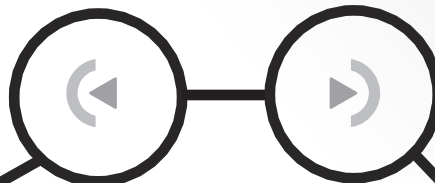
Tap here to switch on and off

**CHANGE MODE**

Tap here
To change between
color, scene and
dimmer mode

**RESET**

Tap both arrows together
to remove any dimmer
and color changes

**COLOR/SCENE/DIMMER**

Tap the arrows to change color,
scene and dimmer values

STICK-DE3 THE STAR OF THE STICK FAMILY

The feature rich STICK-DE3 has been designed to provide a control solution for the most demanding of projects which anybody can use. The controller integrates a graphical color display allowing scene photos to be displayed. Easily view the selected zone, scene name and design without the need to navigate through complex menus.



- New glass design
- Graphical color display
- Color/dimmer/speed palette
- Touch sensitive buttons
- Touch sensitive wheel
- Multi-zone microSD memory
- 500 scenes, 10 zones
- 1024 DMX channels
- USB & Ethernet connectivity
- RS232, ports, infra red
- Clock and calendar
- Network communication
- Catalog of designs
- OEM customization
- Windows/Mac software
- iPhone/iPad/Android

Compatible with :



ARCOLIS
mobile lighting control

ARCOLIS
mobile lighting control

THE LIGHTING CONTROLLER THAT EVERYBODY UNDERSTANDS

The STICK-DE3 is based on 4 modes. Scroll around the touch sensitive wheel to change the dimmer, color, speed or scene or tap around the wheel for direct access to a value. The arrows can be used to step through values.

Use the arrows to switch between scenes (default configuration)

ZONE

Choose your zone and run up to 10 scenes simultaneously.

DIMMER

RAINBOW

Dimmer
78%

Make your lights brighter/darker and adjust the saturation.

COLOR RGB

RAINBOW

Color

R	G	B
043	230	255

GARDEN

Easily scroll through over 16 million colors, or set RGB values with the arrows.



Tapping the center button will undo a dimmer, speed or color change.

SCENE

RAINBOW

Scene
09

GARDEN

Select from up to 50 static or dynamic scenes, use the arrows to change current scene.

SPEED

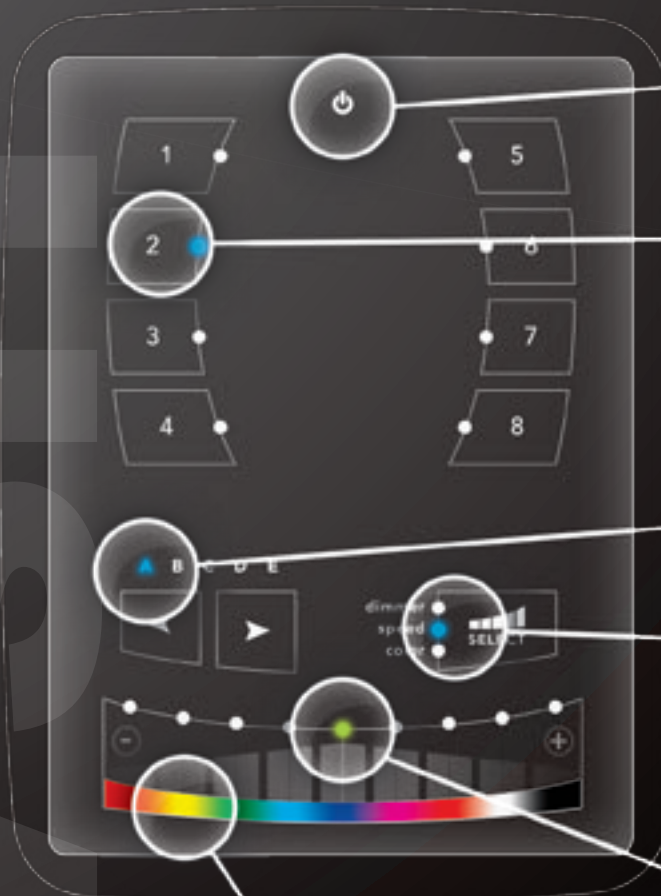
RAINBOW

Speed
78%

Speed up and slow down a dynamic scene such as a color changing effect.

STICK-KE1 HOW TO USE ?

A truly simple controller: an on/off button at the top; 8 buttons to choose from up to 200 lighting effects (25x8); 2 buttons to cycle between pages; and a horizontal fader to instantly adjust dimmer, speed and color.



A Blue LED is used to indicate whether the unit is on or off (Blackout).

Buttons 1-8 are used to select individual scenes. Scenes can be static or dynamic. Double pressing buttons 1-8 will reset the Dimmer, Speed, and Color to default.

Used to cycle between 25 different pages (A,B,C,D,E x 5). In combination with buttons 1-8, 200 different scenes can be stored.

The select button allows you to cycle through the Dimmer, Speed, and Color fader controls. The fader at the bottom of the unit is used to select the intensity of the Dimmer, Speed, and Color settings.

The colorized fader of the D2 design offers a direct access to basic colors with a simple touch.

The Green LED indicates that the Dimmer, Speed, and Color settings on the STICK are set to default. If the fader is moved to the right or left of the default (green), one of the 8 blue LED's will indicate your current intensity level.

COMMENT UTILISER LE STICK ?

Rien n'est plus simple : bouton on/off en haut, 8 boutons pour choisir l'ambiance lumineuse, 2 boutons pour changer de page, un fader horizontal pour modifier instantanément l'intensité, la vitesse ou la couleur des effets.

français

¿ COMO UTILIZAR EL STICK ?

Nada es más sencillo: botón de encendido/apagado en la parte superior, 8 botones para escoger el efecto luminario, 2 botones para cambiar la página, y debajo el fader horizontal para ajustar inmediatamente el dimmer, la velocidad y el color.

español

KURZANLEITUNG DES STICK'S

Nichts ist einfacher: eine Ein- und Ausschaltfläche, 8 Schaltflächen um Lichtstimmungen und Effekte abzurufen, 2 Schaltflächen um zwischen den Seiten zu wechseln, und einen horizontalen Fader um den Direktzugriff auf Dimmer, Geschwindigkeit und Farbe zu ermöglichen.

deutsch

STANDARD DESIGN 4 OFFICIAL VERSIONS



WD1



BD1



WD2



BD2

The black and white frames and the 2 official pictures give the possibility to choose between 4 official versions. (WD1 is the default version). The colorized fader of the D2 design helps to access the basic colors in one touch.

CUSTOMIZATION WITH THE DESIGN CENTER

A new tool allowing you to design the STICK background picture is now available.

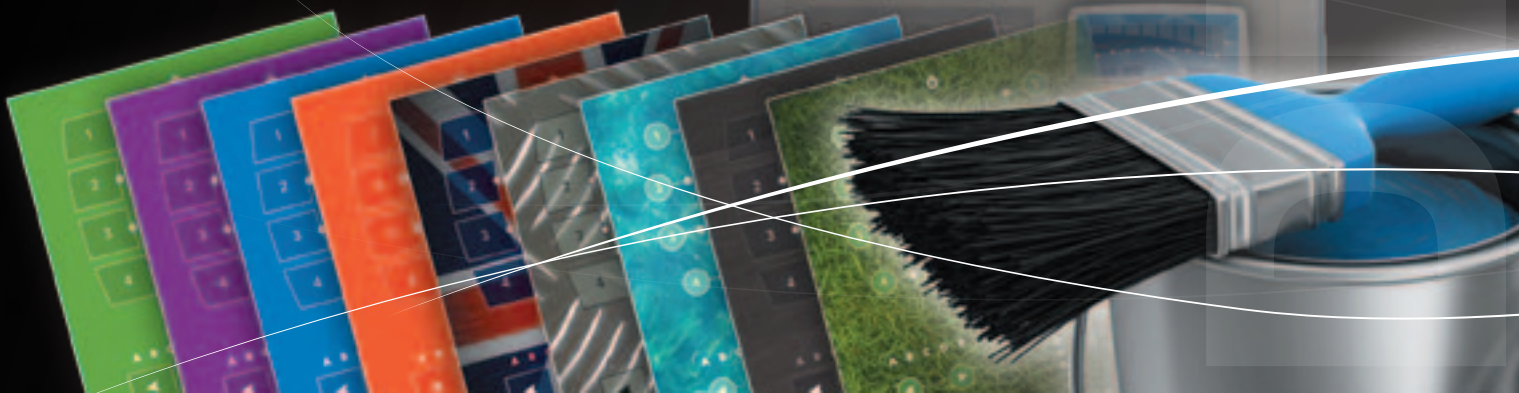
With just a few clicks, it is possible to change the shape of all buttons: scenes, pages, power, select, fader as well as customizing colors, background picture and logos...

You can save your designs and make them available for other users.

Once the JPG 300 dpi image has been downloaded and printed, it can be installed under the STICK glass panel.



http://www.nicolaudie.com/stick_config/



SIMPLE USE WITH USB



Using the "plug and play" USB connection is the most simple way to program the STICK controller: connect the device, start the programming software, create the show and finally press the "write memory" button to save the show into the stand alone memory.

ADVANCED USE

90% of applications will use USB and DMX512 connections only, but the most demanding of our customers will also be able to interface additional devices such as contact closures, audio input, RS232, ethernet, cordless remote control...

CONNECTIVITÉ SANS LIMITE

90% des applications n'utiliseront que les connexions USB et DMX512, mais les clients les plus exigeants pourront aussi interfacer d'autres périphériques: Contacts sec, Entrée audio, RS232, Ethernet, Télécommande sans fil...

français

CONECTIVIDAD SIN LÍMITES

El 90% de las aplicaciones usarán solamente los conectores USB y DMX512; pero nuestros clientes más exigentes aprovecharán el resto de nuestros conectores como puertos I/O (contacto seco), entrada Audio, RS232 (serial), Ethernet, control remoto...

español

UNBEGRENZTE KONNEKTIVITÄT

90% aller Geräte besitzen nur USB- und DMX512-Anschlüsse, aber unsere anspruchvollsten Kunden können weitere Bauteile, wie Kontaktschließer, Audio Input, RS232, Ethernet, schnurlose Remote-Control anschließen.

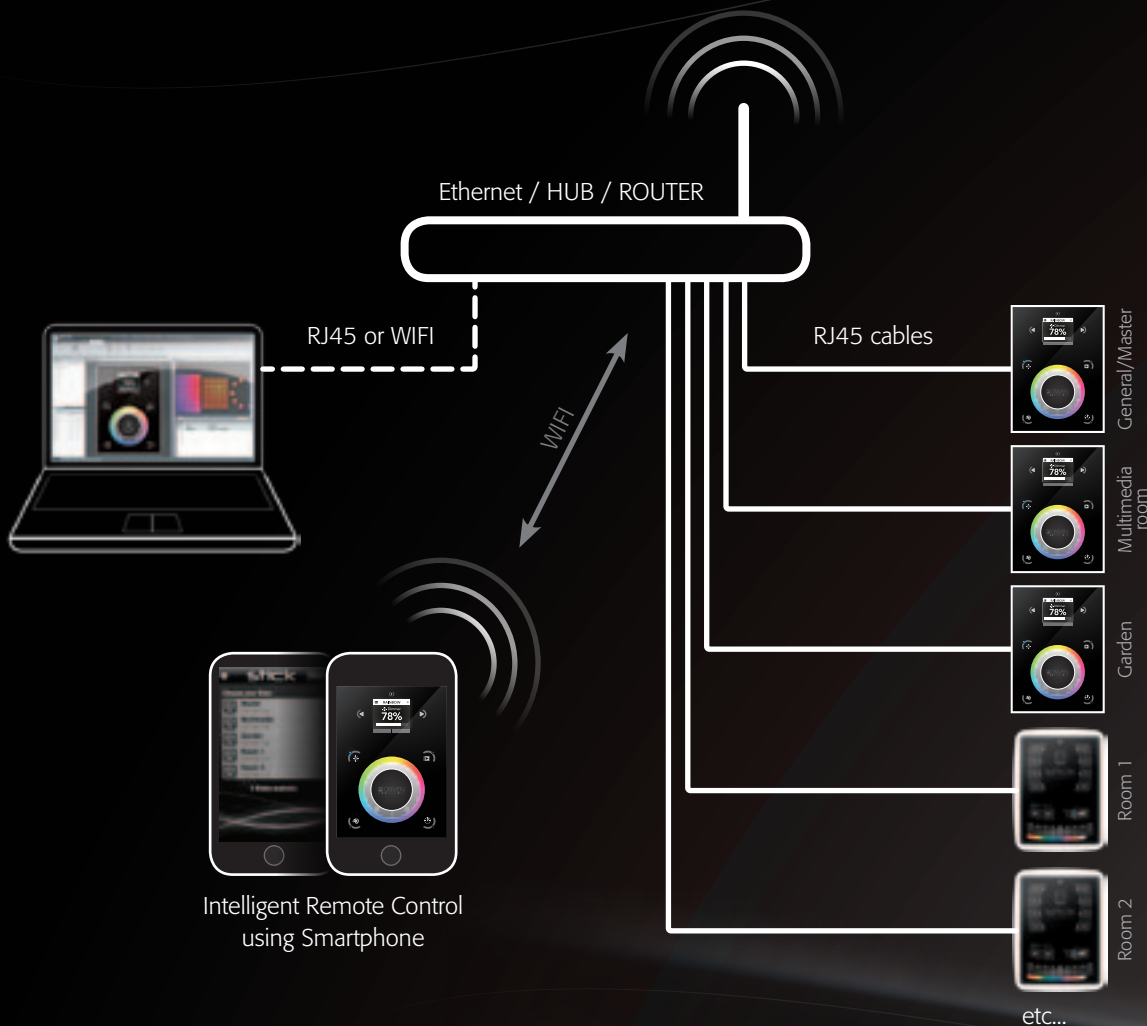
deutsch

NETWORK SYNCHRONIZATION

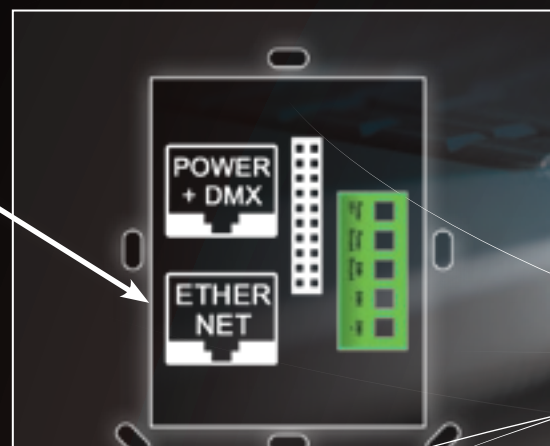
Ethernet connections of STICK-KE1 and STICK-DE3 offers the possibility to interconnect several STICK controllers for multiroom installations and direct control via a cable or wireless network using a computer or a smartphone.

How does it work?

- A single ESA Pro show/document is used. This includes all DMX fixtures and zones. As long as you assign the fixtures to the different zones, the "Areas patch" window will allow you to assign each zone to a physical STICK controller.
- Each STICK controller's memory is written simultaneously using its name and IP address over the local network.
- If multiple STICKs control the same DMX zone, they can be completely synchronized to follow each other.



To access Ethernet network features, you need a STICK-KE1 or a STICK-DE3.



SOFTWARE EASY STAND ALONE

Easy Stand Alone software has evolved over the years to become a worldwide reference for architectural lighting control. It only requires a few minutes to setup the software and gain full control of any kind of lighting.



Designed primarily for architectural applications, our Easy Stand Alone has been used for more than 10 years by lighting professionals all over the world.

Easy to learn, it allows you to simply create a single zone show - one scene at a time - with static or dynamic scenes, even for those with little knowledge of lighting control.

DMX RECORDER*

This new tool allows you to simply record real-time DMX sequences and to save them into the stand alone memory. If you are a big fan of your lighting desk, you can use this to program your show, then use the STICK as a playback device.

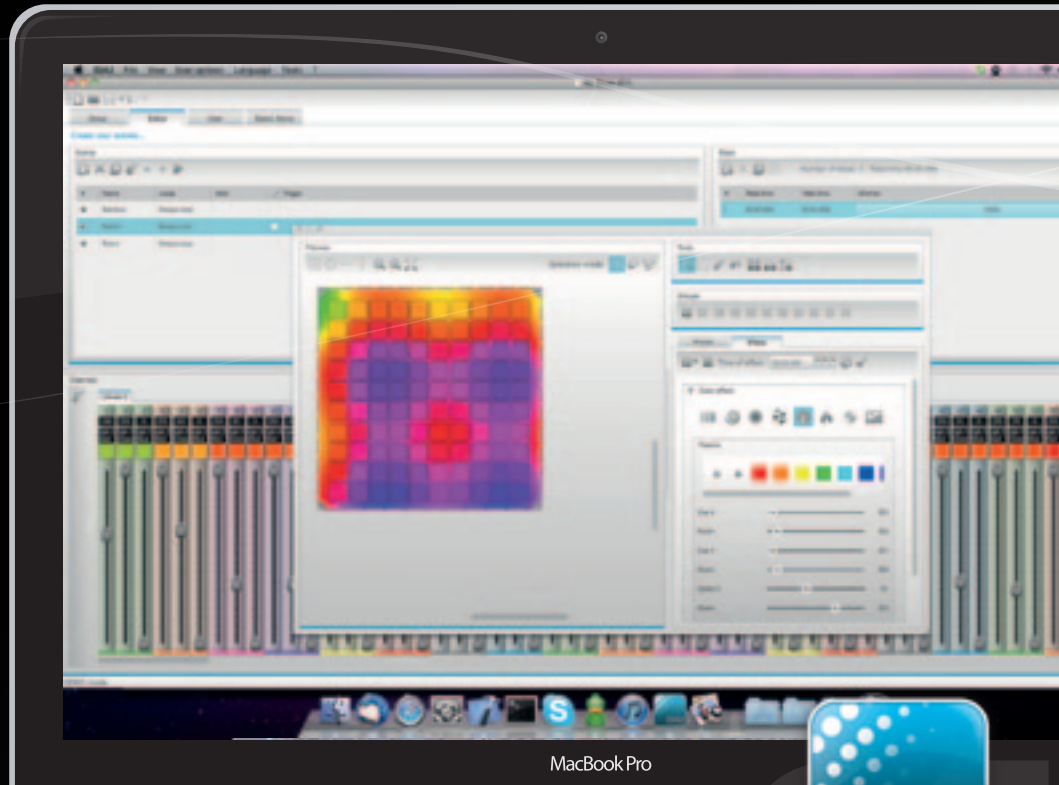
** Requires a DMX Input interface*



NEW SOFTWARE ESA2 PC/Mac

Easy Stand Alone 2 is the radical new stand alone package from Nicolaudie. Available for Windows and Mac OS X, lighting programming has never been more accessible.

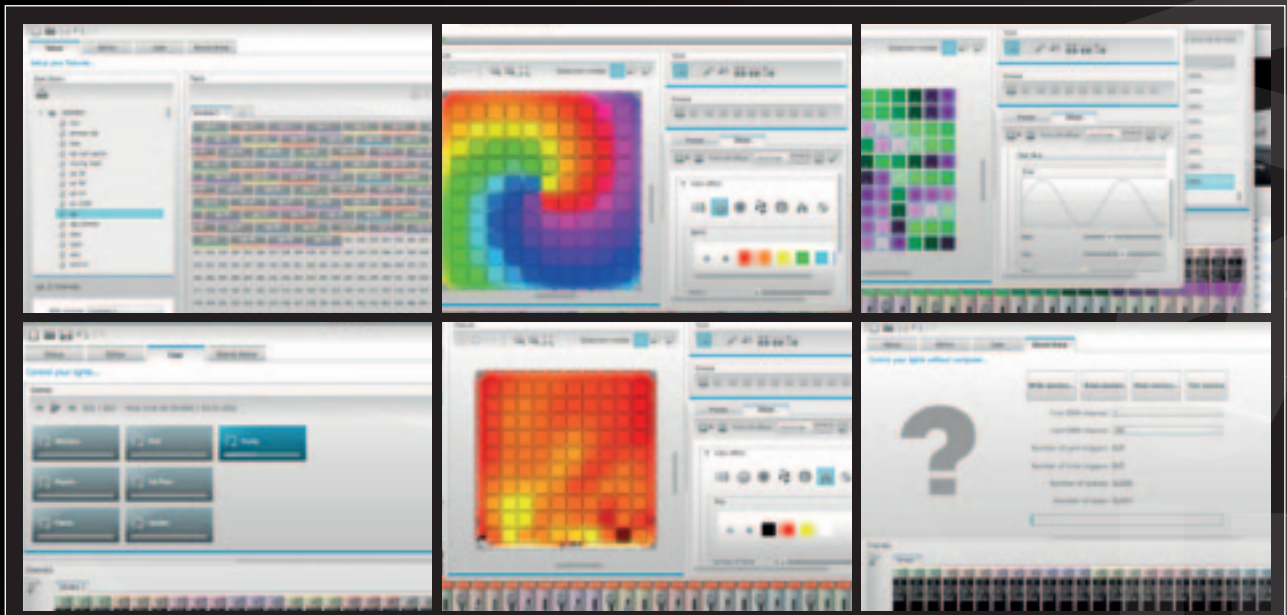
The dynamic software combines simplicity and a feature rich effects generator to make it the one of the most definitive lighting control products available. Lighting programming has never been so simple with ESA2.



Drag & drop to add your lights

Build color changing sequences

Advanced vector effects creation



Real time lighting control

Quickly create stunning effects

Play without a computer with 1 click

TIMELINES WITH ESA Pro SOFTWARE

ESA Pro combines many innovations along with an ergonomic design. It has been specifically designed for the STICK SD card range and includes powerful new tools required by the latest lighting fixtures. The software has been developed specially for architectural lighting and features easy to use effects which can be dropped onto timelines, along with multi-zone and multi-STICK synchronization allowing you to program a project with multiple rooms and areas with ease.

It is possible to setup several zones for a show allowing you to split up a building for example and to play different sequences in each room.

Each zone contains a list of scenes (sequences). They can be static or dynamic, loop or not...

In this window we can group the fixtures, setup their position and then use the «Rects» to define a virtual position for a sequence. We could for instance, play several videos on the same LED screen at different positions.

Every scene is built with the timelines. Thanks to this tool, it becomes very easy to build your show.

Various effects, static or dynamic (matrix effects, curves...) are available and can be dragged to the timelines.



NOUVEAU LOGICIEL ESA PRO

Le nouveau logiciel ESA Pro a été spécialement conçu pour l'éclairage architectural et combine la simplicité d'utilisation d'Easy Stand Alone et de nouvelles fonctionnalités nécessaires au contrôle des dernières générations de projecteurs à LED.

français

SOFTWARE NUEVO ESA Pro

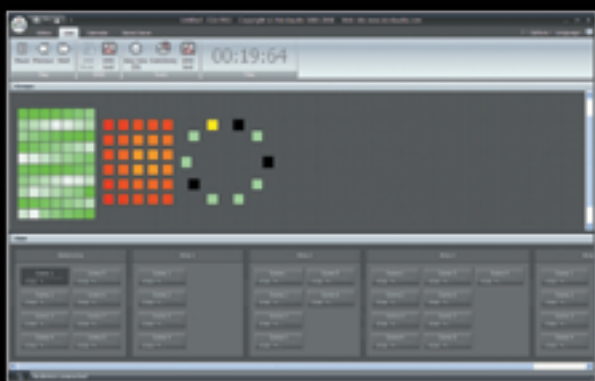
El nuevo ESA Pro es creado para la iluminación arquitectónica y combina novedades ergonómicas. Ha sido diseñado para las características del STICK el cual incluye herramientas necesarias para fijaciones LED (línea de tiempo, zona-multiple...).

español

NEUE SOFTWARE ESA Pro

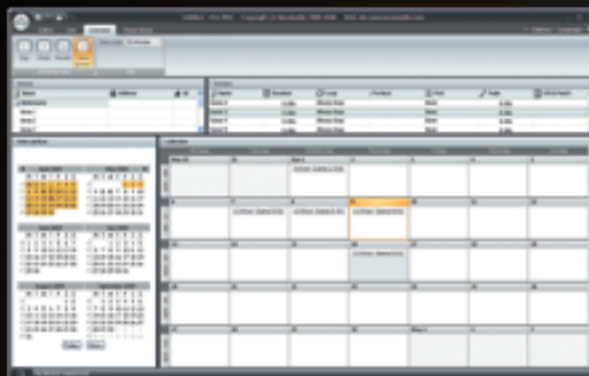
Das neue ESA Pro wurde speziell für den Einsatz in der Architekturbeleuchtung entwickelt und verbindet innovatives und ergonomisches Design. Natürlich wurde diese vornehmlich für die STICK Funktionalitäten gestaltet und enthält neue leistungsstarke Tools, die für die jüngsten LED Geräte benötigt werden. (Timeline, Multi-Zone, Kalender, Matrixsteuerung...)

deutsch

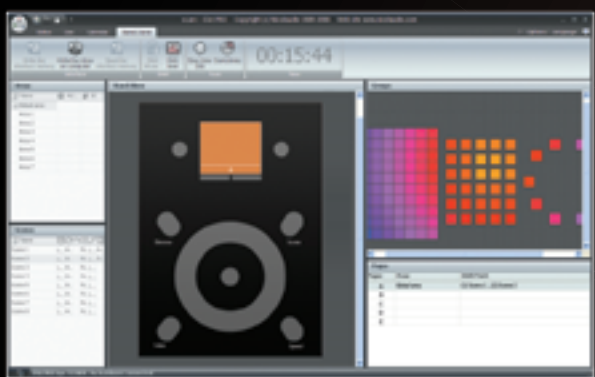


The live tab allows you to play the created sequences. You can either test your stand alone show before writing to the memory or use this tab for real-time control of your lights.

Thanks to the calendar, it becomes very easy to setup a time/date trigger for every scene. Simply drag the scene to the correct position.



The stand alone tab allows you to directly assign a scene to a button on the STICK. Simply drag and drop the scene onto the image. Once the scenes are assigned, press the «write» button to save the show into the stand alone memory.



DMX LIGHTPAD WIFI REMOTE CONTROL

DMX Lightpad allows you to control STICK-KE1 and STICK-DE3 remotely from anywhere in your building. Simply connect to your wireless local network, the app will automatically find all the STICKs and allow you to control them all at once.

You can set individual passwords for each STICK to prevent unauthorized access.

With a simple and intuitive graphical interface you will be able to control all your DMX fixtures easily, without any technical knowledge.

Triggering scenes and changing the speed, color and intensity has never been so simple!

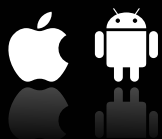


ARCOLIS TOUCH LIGHTING EDITOR

ARCOLIS allows you to easily create a dynamic lighting show for any kind of DMX RGB Fixture. In just a few steps, you'll be able to take control of all your DMX equipment in live, or Stand alone mode.

ARCOLIS is innovating in terms of architectural lighting control. It is available to fit the trendiest portable devices and has become the ideal partner on your worksite or at home to dynamically control your lighting. Thanks to its exclusive concept, selectively changing the lighting surroundings in each area is now made as simple as phoning or sending a text message!

ARCOLIS is compatible with any iOS and ANDROID smartphones or tablets. By using your mouse or touch screen, the various software screens allow you to directly monitor the current environment or to re-program new static or dynamic light environments. ARCOLIS is a simple application which can be used by just about everyone in any situation.



ARCOLIS
mobile lighting control

mobile lighting control

ARCOLIS

ARCOLIS

STICK to the future...

“

In 1987, we designed the world's first computerized lighting controller. In 2000, the sector was revolutionised by our S.I.U.D.I. "Sunlite intelligent USB-DMX interface."

Today, the "Sunlite Touch-sensitive Intelligent Control Keypad" which is commonly called STICK has the best assets to "Stick to forthcoming needs" and to become a new worldwide standard.

”

*Bruno Nicolaudie
Founder and President
www.nicolaudie.com*

